

# Virginia Women's Center Increases Network Performance and Reduces Management Costs



*"Arcus has always proven to be a thorough, conscientious, and proven ally of Virginia Women's Center, and their referrals have led to partnerships that we've had for years. We've worked with Arcus on every major networking project we've had in the past 15 years. I wouldn't make a move on our network without first consulting with Arcus."*

- Marc Conklin, I.T. Director

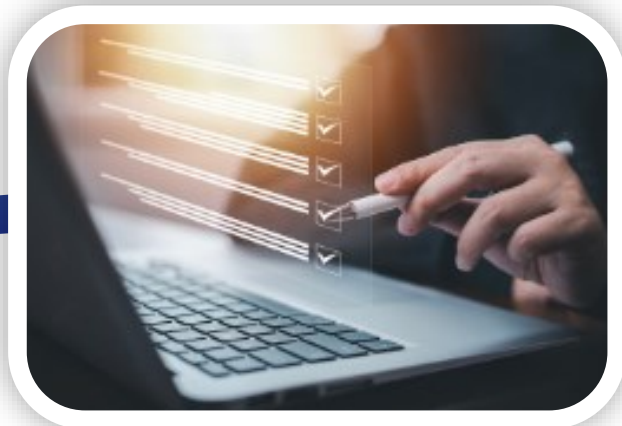


## Case Study Company Overview

### Full-Service Women's Health Care Practice

Virginia Women's Center (VWC) is a regionally recognized women's health care organization with offices strategically located across Central Virginia with newborn delivery and gynecologic services available in regional hospitals.

**Company Size:** 5 locations/~250 Employees      **Industry:** Healthcare



### Technology Focus



# Challenges



## VWC has faced rapid growth in radiology services resulting in high network demands

- Goal is to perform diagnostic mammography, review and share results in the same visit.
- Requires 3D mammography images be sent from local modalities to offsite PACS as close to real-time as possible.
- Had frequent, intermittent issues with image transmission.
- Combination of lack of bandwidth and moderate to high network latency caused problems.
- Constant restarts in the image sending process, led to delays of as much as 30 minutes in transmission to PACS.

# Use Case

## VWC sought to Increase capacity, reduce latency and improve patient experience with a full network redesign:

- Address Sensitivity to network latency and bandwidth for mammography modalities.
- Reduce/Eliminate delays in image transmission.
- Leverage RichWeb for managed WAN to free up internal IT resources.
- Incorporate design changes for improved routing from all locations.

# Results

## Since deploying their Managed WAN, VWC has experienced these results:

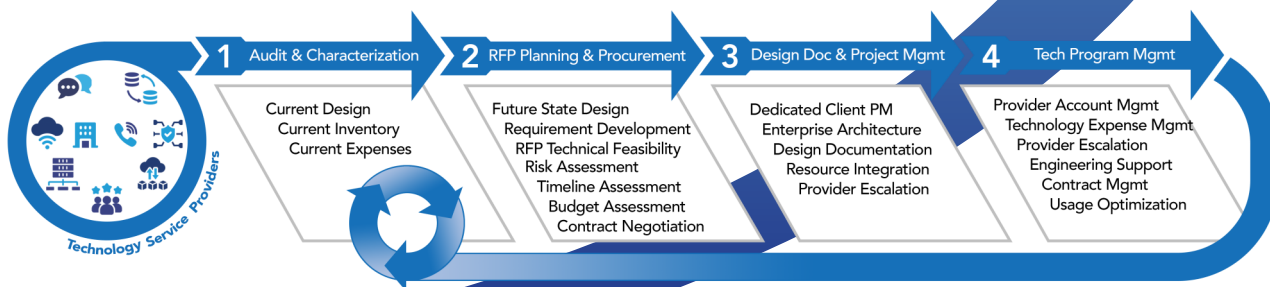
- Increased bandwidth 20x, a mere 2x on cost.
- Added management on the network to free up resources.
- Images are crossing to the PACS quickly, with network latency of <3 ms on circuits.
- Improved communications of potential outages and fixes.

Bandwidth Increase

**20x**

PACS Related Delays

Reduced  
**~95%**



## Arcus is a Strategic IT Consulting and Project Management Firm

The lifecycle approach to Auditing, Procuring, Implementing, and Supporting all areas of technology results in customers making better IT buying decisions.